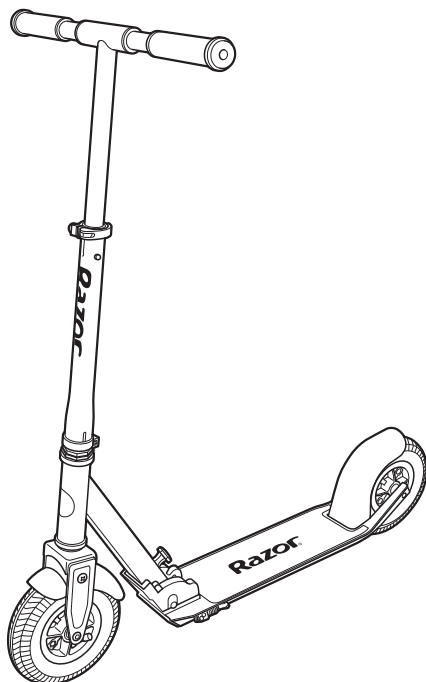




EN Read and understand this guide before using product.
ZH 使用产品前请阅读并理解本指南。



A5 AIR™ SCOOTERS



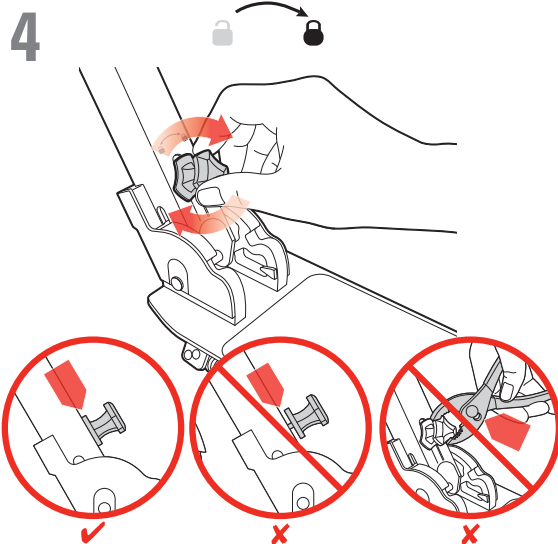
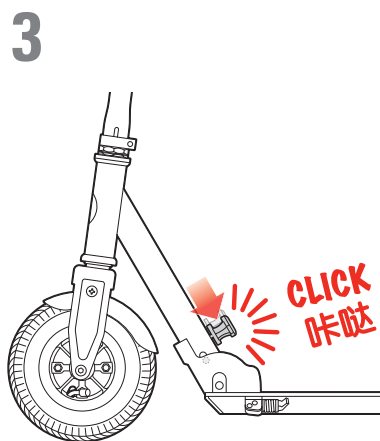
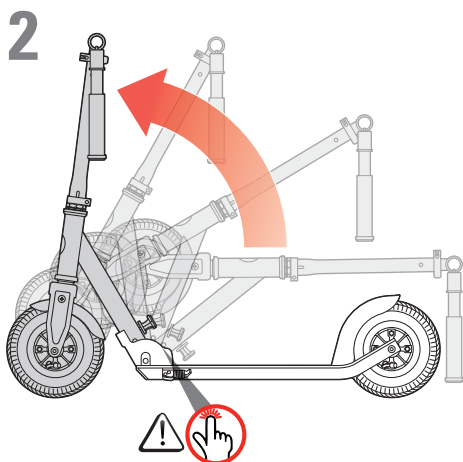
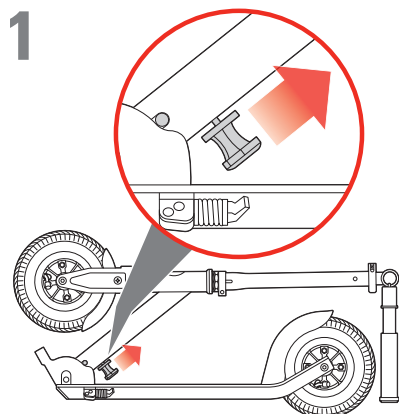
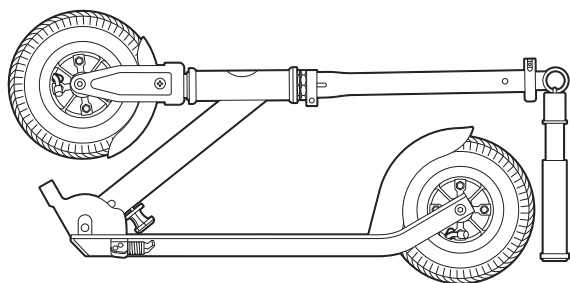
1-9



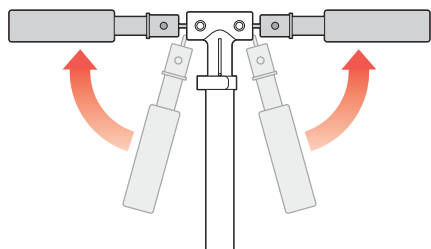
10-13

www.razor.com

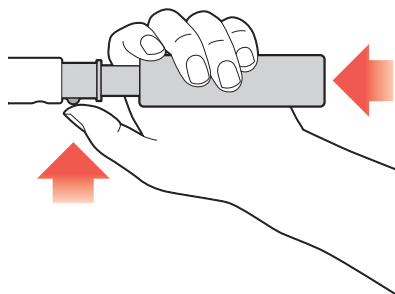




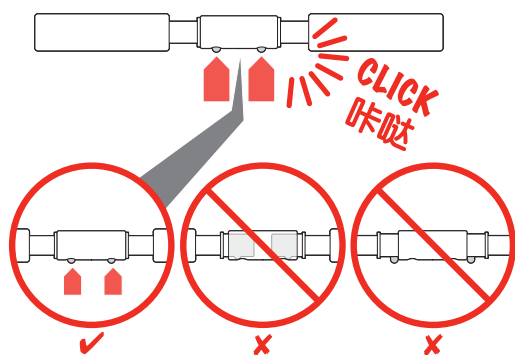
5



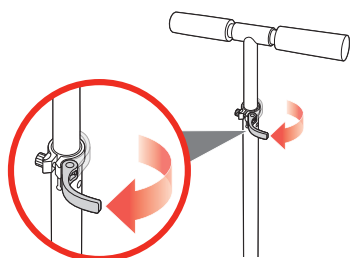
6



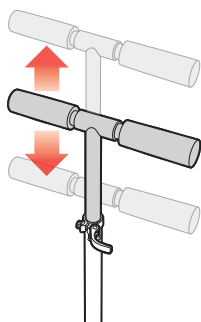
7



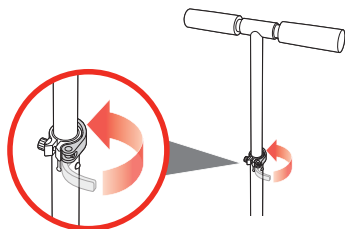
8



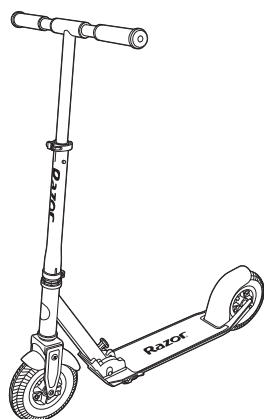
9

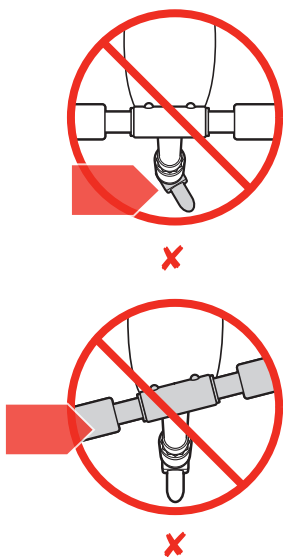


10

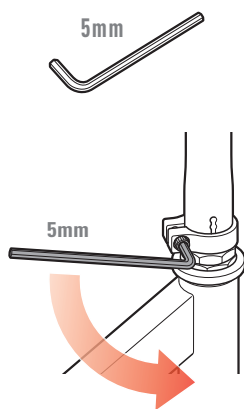


②

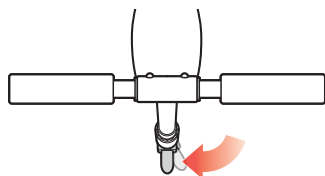




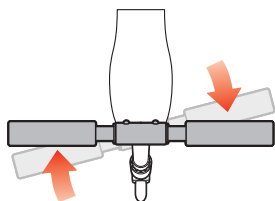
1



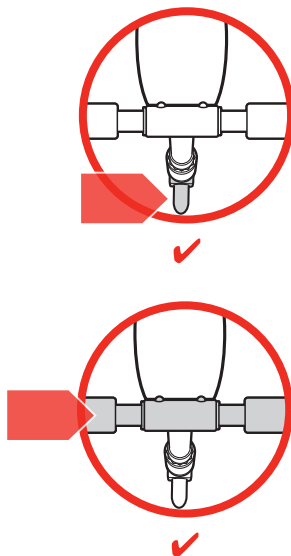
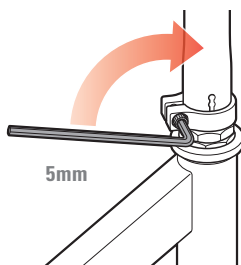
2



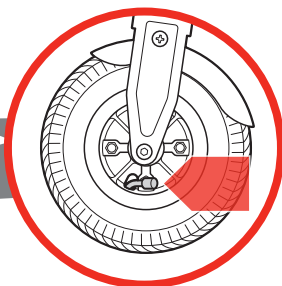
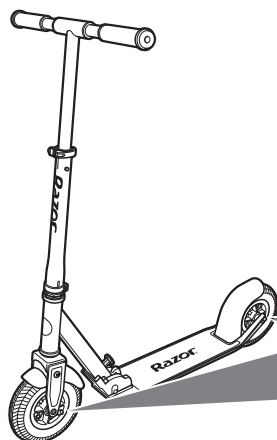
3



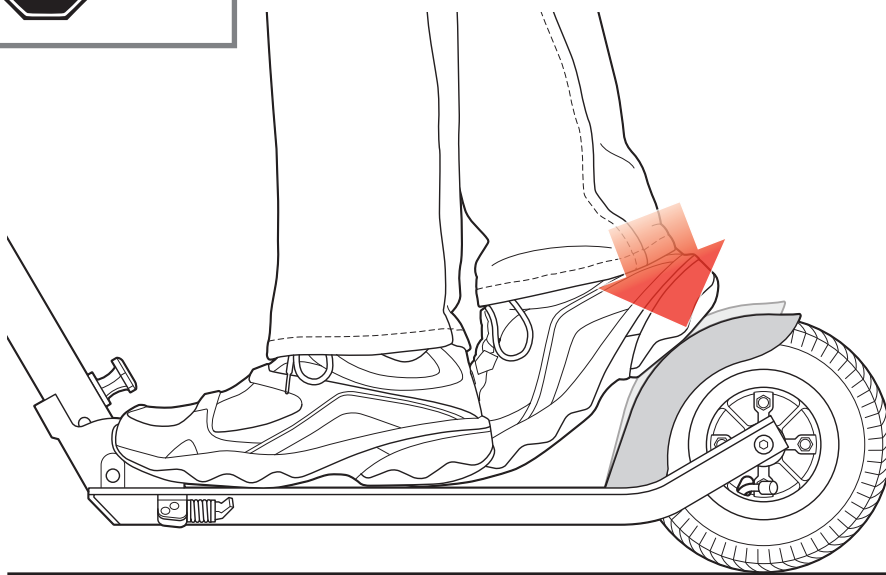
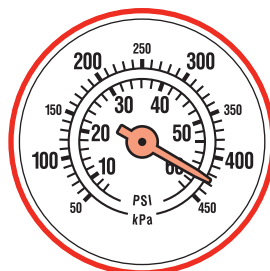
4



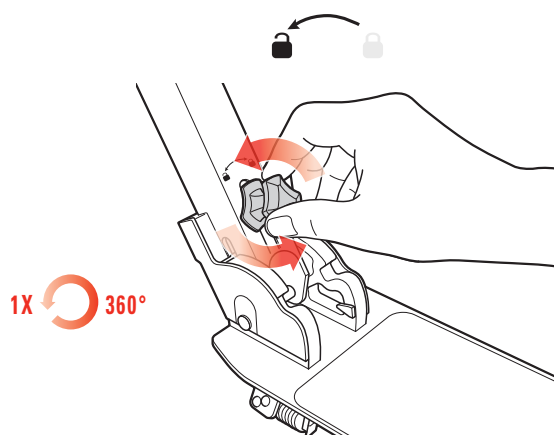
5



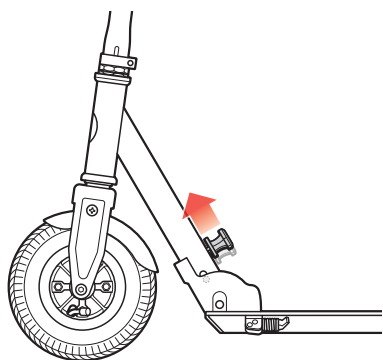
60 PSI
415 kPa



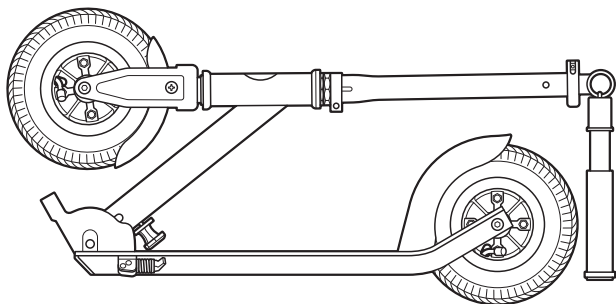
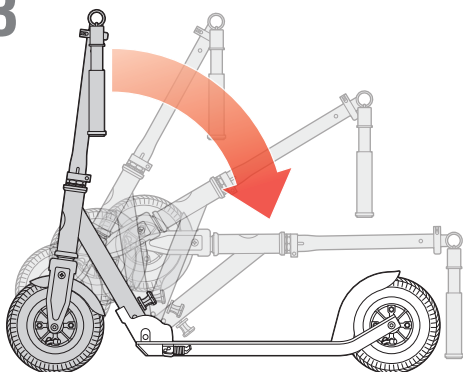
1



2

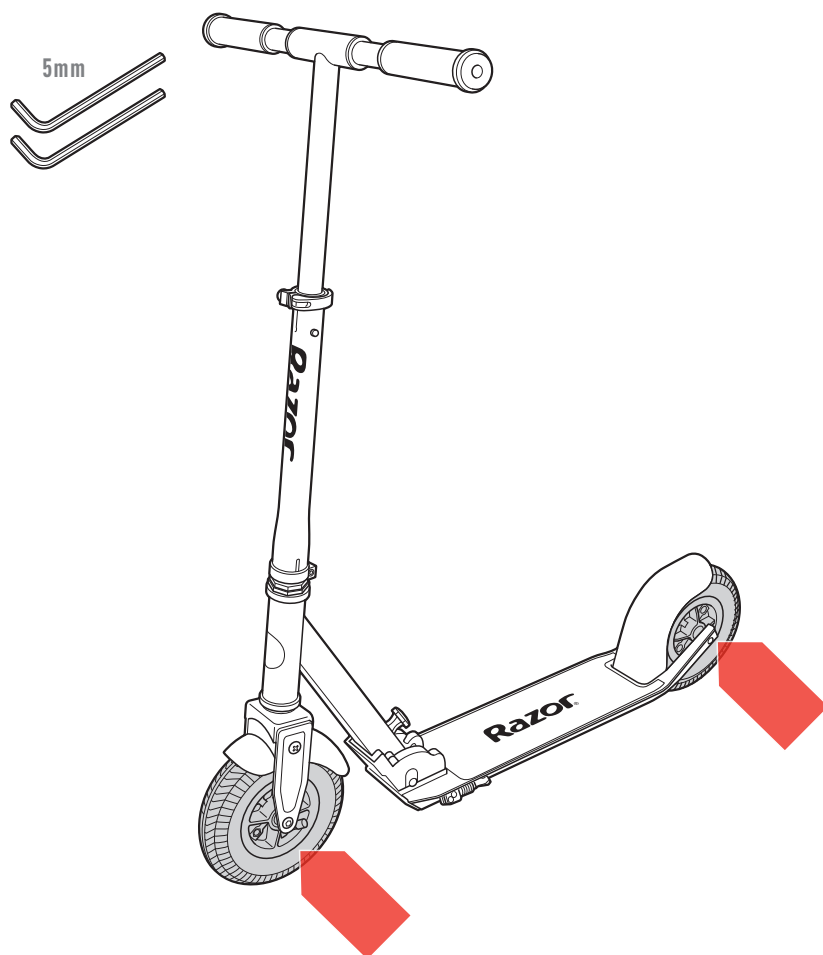


3

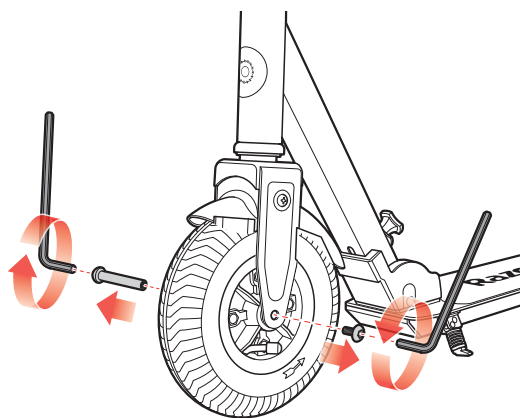


5

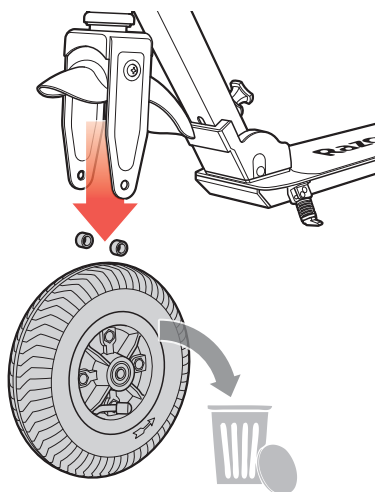
EN Front wheel replacement / Rear wheel replacement
ZH 前轮更换 / 后轮更换



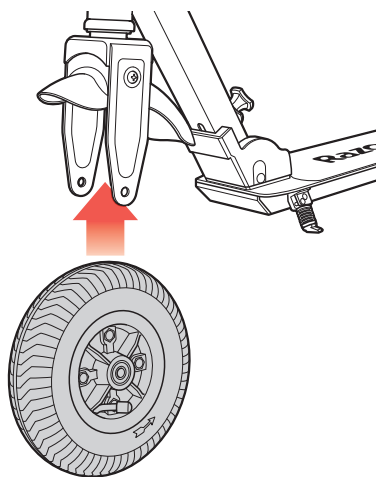
1



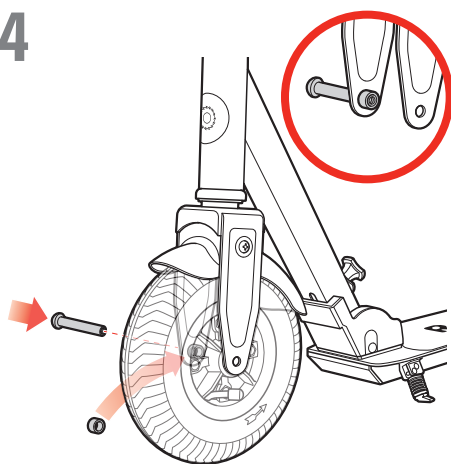
2



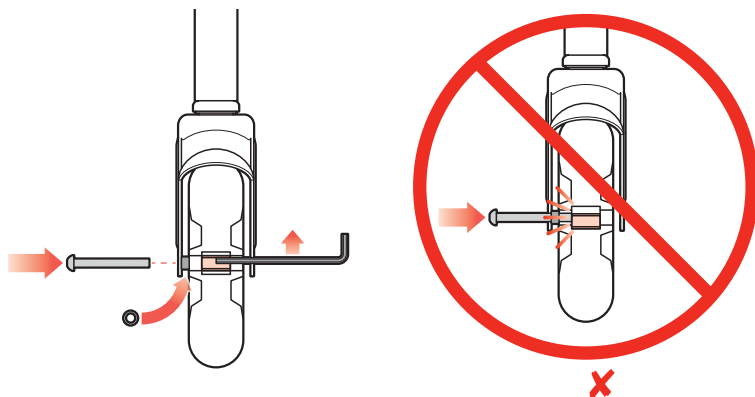
3



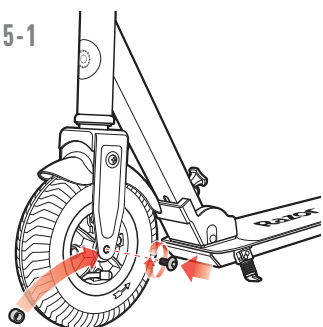
4



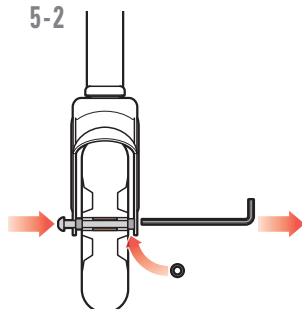
5



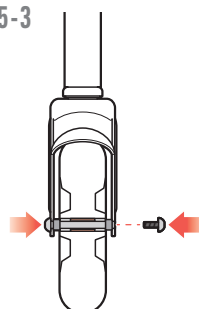
5-1



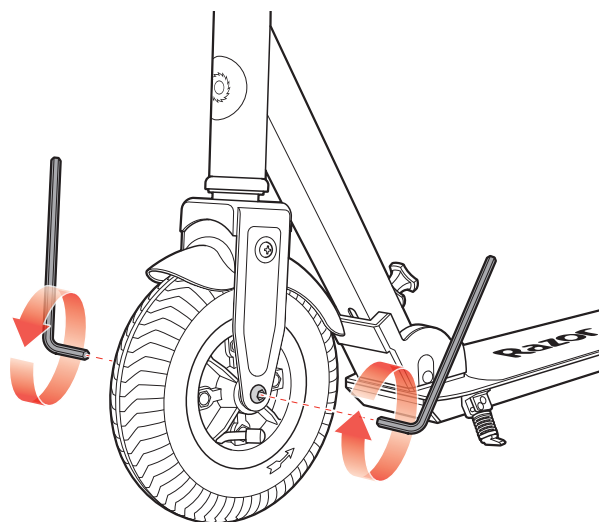
5-2



5-3

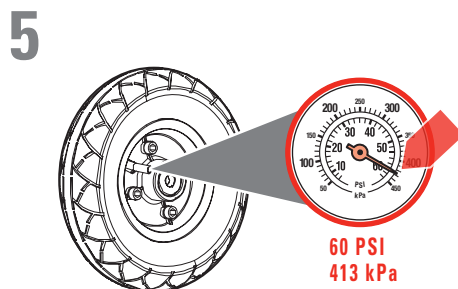
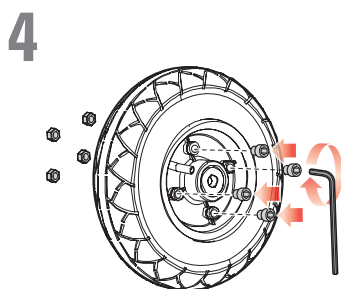
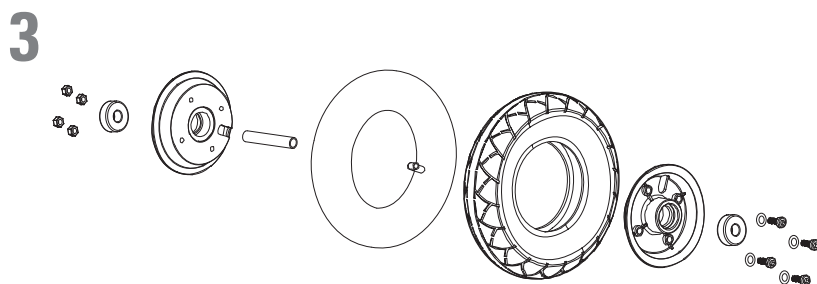
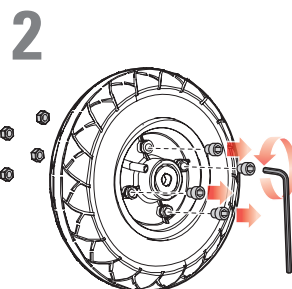
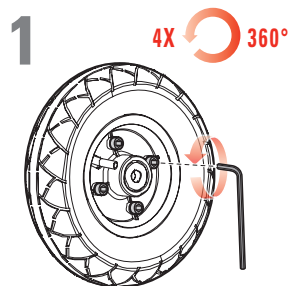


6



8

EN Replacing the Inner Tube
ZH 更换内胎



! WARNING. To avoid serious injury:

- Adult supervision always recommended.
- Parents and carers should ensure that children are properly instructed in the use of this product.
- Hold handlebars at all times.
- Ride outdoors in places that allow you to improve your skills, and NEVER in traffic, on roads or near motor vehicles, where serious accidents can happen. Watch your surroundings for pedestrians, bike, skateboard, scooter and other riders. Use in areas free from hazards such as poles, hydrants, and parked cars.
- Wet weather impairs traction, braking and visibility.
- Never use near streets, swimming pools, hills, or steps. Use on smooth, dry, paved surfaces; avoid excessive speeds associated with downhill rides. Don't ride on loose debris (such as rocks, gravel or sand), or speed humps. Do not ride in the dark.
- Always wear shoes when using this product.
- Allow only one rider at a time on this product.
- Do not touch the brake after using, it will be hot.
- Like any other moving product, riding this product can be a dangerous activity and may result in injury even when used with proper safety precautions.
- While these are some of our strongest scooter products, that does not eliminate risks presented by scooter riding.
- Due to requiring more skill to ride this scooter, rider needs to carefully use the scooter to prevent tumbling off or hurting the rider or others.

Age and Weight Limits

- Not for children under age 8.
- Maximum rider weight 100 kg.

Protective Equipment

- Always wear protective gear - helmet, elbow, knee and wrist guards (note parents should evaluate whether their child's use of wrist guards may impair their ability to hold handlebars).

Failure to heed product warnings, or to exercise caution, increases risk of injury!

Where and How to Ride

- Stop by pushing on brake with foot.
- Learn with a friend or parent to help.
- Obey local traffic law and regulation to use the scooter.

Maintenance

- Always inspect product before riding and regularly maintain it. Replace worn or damaged parts immediately.
- Check that the steering system is correctly adjusted and that all connection components are firmly secured and not broken.
- Check brake for proper function. When you push on the brake with your foot, brake should provide positive braking action.
- Under normal circumstances and conditions, the wheels and bearings are maintenance free.
- Always be sure to check tires for excessive wear or damage before riding.
- Do not exceed the tires PSI rating. Over inflation will cause a rupture.
- Regularly check that the various screwed parts are tight.
- No modifications can be made that can impair safety.
- Wipe with a damp cloth to remove dirt.
- If repairs are needed, bring product to a bicycle repair shop.
- Use only authorized Razor replacement parts.

Failure to use common sense and heed the above warnings further increases risk of serious injury. Use with appropriate and serious attention to safe operation. Use caution.

Bolt Tightening Torsion Value Reference Chart

Please refer to chart below to ensure the bolt you have tightened corresponds to below torsion value according to its relevant diameter.

Bolt Diameter	Torsion Value Recommended
Normal Bolt	Torsion Value (N-M)
5mm	5
6mm	10
8mm	21
10mm	34
12mm	53

警告为避免重伤:

- 建议始终在成人监督下使用。
- 父母及监护人应确保孩子已被告知本产品使用的正确方法。
- 总是握紧车把。
- 在可以提高您技巧的地方骑滑板车，不要在交通繁忙地段、公路或机动车附近骑乘，在这些地方可能会发生严重事故。查看您周围是否有行人、自行车、滑板、滑板车及其他骑手，不得在电线杆、消防栓及停泊车辆等危险区域内使用。
- 潮湿天气可导致摩擦力、刹车性能和能见度下降。
- 切勿在街道、游泳池、斜坡或阶梯附近使用。仅在平滑、干燥的铺砌路面上使用；下坡时速度不得过快。切勿在松动岩屑（如岩石、砾石或沙子）或限速坡上骑乘。不得在黑暗中骑乘。
- 使用该产品时务必穿鞋子。
- 该产品一次仅允许一人骑乘。
- 使用后不得触摸刹车装置，它温度很高。
- 与其他运动产品一样，骑乘该产品是一项危险的活动，即使采取了适当的安全预防措施，也可能导致受伤。
- 虽然这些是我们最坚固的滑行车产品，但也不能消除滑行车骑乘中的风险。
- 由于使用滑板车需要较大的技巧，应小心使用滑板车，以防止跌倒和撞击伤及使用者和第三方。

年龄和体重限制

- 8 岁以下儿童不宜使用。
- 骑手体重上限：100 千克。

防护装备

- 务必穿戴防护装备 - 头盔、护肘、护膝和护腕（注意父母应评估他们的孩子使用护腕是否会影响他们的孩子握紧车把）。

若无视产品警告或疏忽大意，会增加受伤的风险！

在哪里骑乘，如何骑乘

- 用脚踩刹车实现停止。
- 在朋友或父母的帮助下学习。
- 遵守所有当地的交通法规和滑板车使用规定。

维护

- 在骑乘之前务必检查本产品，并定期维护。立即更换磨损或损坏的部件。
- 确认转向系统调节正确，所有连接件牢固固定，未被折断。
- 确认刹车功能正常。当您用脚踩刹车时，刹车装置应提供有效刹车动作。
- 在正常环境和情况下，车轮和轴承均免于维护。
- 骑乘时，请务必检查轮胎是否有过度磨损或损坏。
- 充气时请勿超过轮胎的PSI，充气过度会令轮胎破裂。
- 定期检查以螺纹紧固件是否紧固，尤其是轮轴。
- 不得进行任何可降低安全性的改装。
- 用湿布擦拭滑板车，以清除污垢。
- 若需要维修，请联系售后服务。
- 仅使用经 Razor 认可的替换部件。

不当使用或忽略以上警告内容使用本产品，可能导致受伤甚至死亡的风险。请谨慎使用本产品。

螺栓锁紧扭矩参考

请按照下表的直径参考螺栓锁紧的扭矩值

螺栓直径	推荐扭矩
一般螺栓	扭矩 (牛/米)
5mm	5
6mm	10
8mm	21
10mm	34
12mm	53

CUSTOMER SERVICE CONTACT INFORMATION

AMERICAS

Razor USA LLC
P.O. Box 3610
Cerritos, CA 90703
USA

+1 866 467 2967
Monday - Friday
8:00 AM - 5:00 PM Pacific Time
customersupport@razorusa.com

CHINA

Razor Trading (Shanghai) Co., Ltd
Room 905, JZ Plaza, No. 2008
Huqingping Road, Shanghai
CHINA

+86 21 5976 8575

Printed in China for Razor USA LLC.

Copyright © 2003-2017 Razor USA, LLC. All rights reserved. Razor® and the Razor logo design are among the registered trademarks of Razor USA LLC in the United States and/or select foreign countries. A5 Air is a trademark of Razor USA LLC.

售后服务中心联系信息

美国

美国锐哲有限公司
邮政信箱 3610
禧瑞都市 CA 90703
美国

+1 866 467 2967
星期一至星期五
8:00 - 17:00 太平洋時間
customersupport@razorusa.com

Razor USA LLC 中国专印

中国

锐哲贸易 (上海) 有限公司
上海市沪青平公路2008号竞衡大业广场905室
中国

+86 21 5976 8575

版权©2003-2017 年美国Razor有限公司版权所有。Razor® 以及Razor标志设计属于美国和/或其他所选国家内美国Razor有限公司的注册商标。 A5 Air是美国Razor有限公司的注册商标。



EN14619: 2015 (Class A)